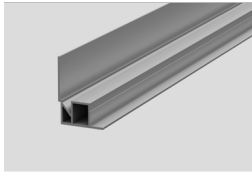
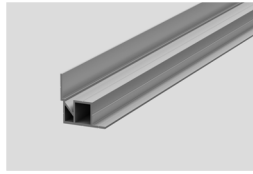


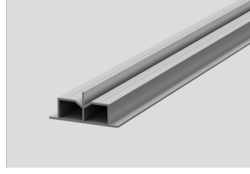
Profiles



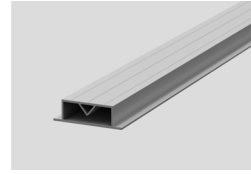
**Edge profile**  
Upstand 38 mm



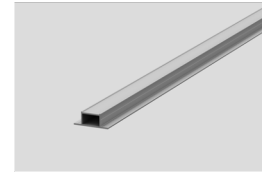
**Edge profile**  
Upstand 22 mm



**Secondary profile**  
With central web

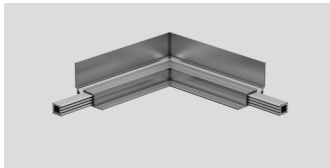


**Secondary profile**  
With screw channel

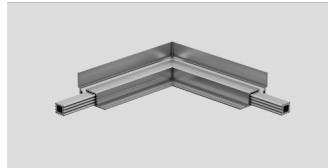


**Supporting profile**  
Slim system

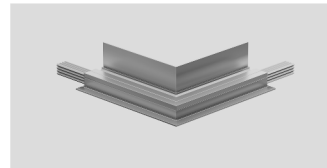
Accessories and height compensation



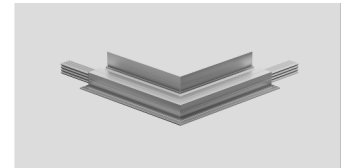
**Exterior corner, 90 degrees**  
Upstand 38 mm



**Exterior corner, 90 degrees**  
Upstand 22 mm



**Interior corner, 90 degrees**  
Upstand 38 mm



**Interior corner, 90 degrees**  
Upstand 22 mm



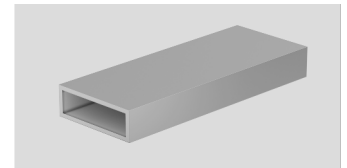
**Longitudinal connector**  
Inner | length: 100 mm



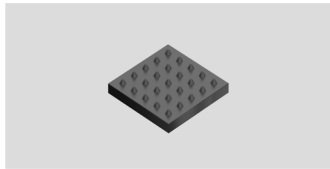
**Longitudinal connector**  
Outer | length: 100 mm



**Corner connector**  
90 degrees | length: 60/60 mm



**Connection profile**  
Dimensions: 30/15/2 mm



**Support pad**  
Board support on profile



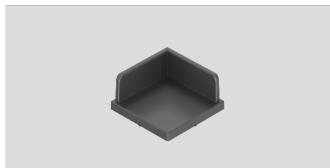
**Joint element corner**  
For exterior corner, 90 degrees



**Joint element T-shape**  
For edges and joints



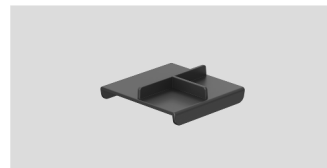
**Joint element cross-shape**  
For cross joints



**Corner support**  
For interior corner, 90 degrees



**T-shaped support**  
For edges and joints



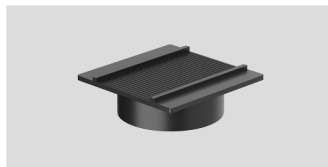
**T-shaped support**  
For joints



**Cross shaped support**  
For cross joints



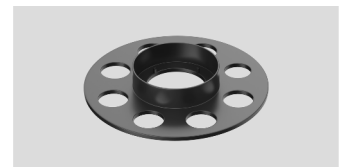
**Rubber pads**  
Dimensions: 90/60/4 or 6 mm



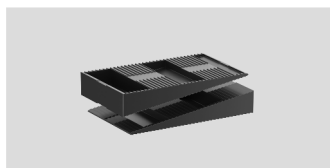
**Support foot support plate**  
Dimensions: 80/80/5 mm



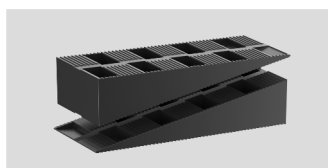
**Support foot spacer**  
Dimensions: 70/70/25 mm



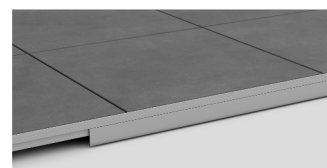
**Support foot base plate**  
Dimensions: 150/150/25 mm



**Wedges, small**  
Levelling zone: 15-25 mm



**Wedges, big**  
Levelling zone: 25-35 mm



**Side cover strip**  
Dimensions: 2000/2/25-175 mm

[www.talux-system.de](http://www.talux-system.de)