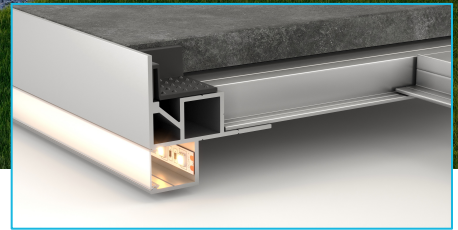




**Profiles & LED technology**  
Everything from a single source!



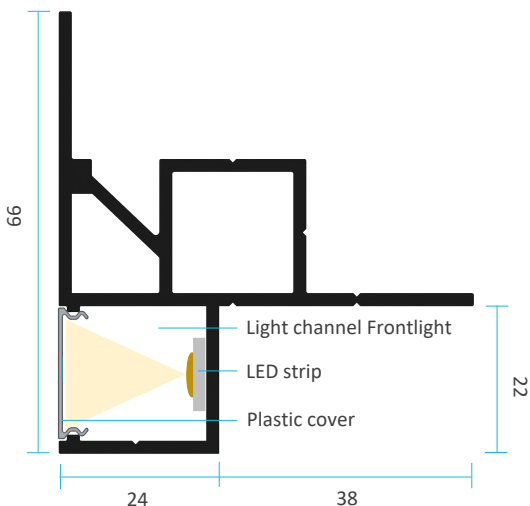
**Product description**

The TALUX edge profile Frontlight makes it quick and easy to build high-quality indirect lighting for patio and balcony spaces. The integrated light channel along the front of the profile provides the option for an impressive illuminated edge finish on free-standing sides of the patio area. This makes the profile the perfect choice for flat roofs and pool copings, where the indirect lighting sets the scene beautifully.

The edge profile Frontlight is compatible with the TALUX Slim System (22 mm) and complements the functional advantages of the TALUX System with innovative and creative options for indirect lighting.

To match the profile, we offer ready-made corner modules, water-protected (IP67) LED strips in various colours and white hues, control sets, and clip-on plastic covers for light diffusion. To achieve a premium quality surface, the profiles are also available powder-coated in a RAL colour of your choice.

**Technical data**



**The advantages at a glance**

- ✓ Integrated light channel for straightforward installation of indirect lighting
- ✓ Innovative system solution
- ✓ Low profile height of 44 mm for low build-up heights
- ✓ Suitable for tiles with 20 mm thickness
- ✓ Profiles & LED technology from a single source

**Technical data for profiles**

Material: Aluminium EN AW 6060 T 66  
Surface: mill-finished / powder-coated  
Lengths: 3 m / 6 m

**System accessories**

- Exterior and interior corners
- Plastic covers
- LED lighting and controls

**LED lighting (IP67)**

- W arm white / neutral white / cool white
- CCT (all shades of white)
- RGBWW (all colours + warm white)
- RGB-CCT (all colours + all shades of white)

**LED control**

- Switch
- Remote control
- App control (WiFi)
- DALI