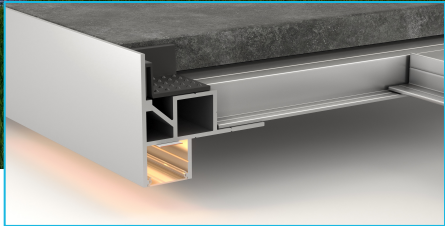


Data sheet – LED edge profile “Downlight”



Profiles & LED technology
Everything from a single source!



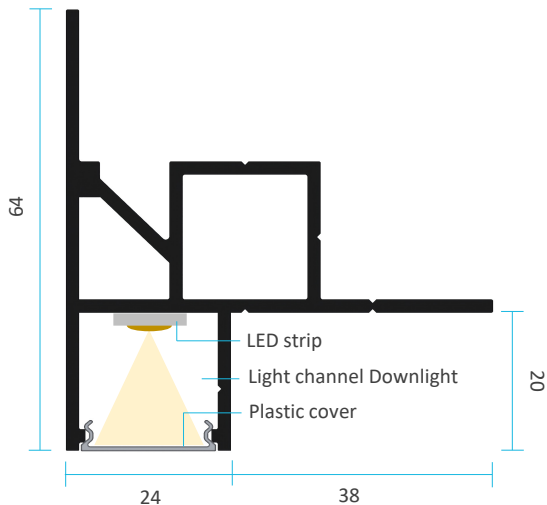
Product description

The TALUX edge profile Downlight makes it quick and easy to build high-quality indirect lighting in patio and balcony spaces. The integrated light channel underneath the profile creates an impressive under-lighting effect on the free-standing sides of the patio area, giving the impression of a floating surface. The profile is therefore ideal for detached patios and pool copings, for example, which are set off superbly with the indirect lighting.

The edge profile Downlight is compatible with the TALUX Slim System (22 mm) and complements the functional advantages of the TALUX System with innovative and creative options for indirect lighting.

To match the profile, we offer ready-made corner modules, water-protected (IP67) LED strips in various colours and white hues, control sets, and clip-on plastic covers for light diffusion. To achieve a premium quality surface, the profiles are also available powder-coated in a RAL colour of your choice.

Technical data



The advantages at a glance

- ✓ Integrated light channel for straightforward installation of indirect lighting
- ✓ Innovative system solution
- ✓ Low profile height of 42 mm for low build-up heights
- ✓ Suitable for tiles with 20 mm thickness
- ✓ Profiles & LED technology from a single source

Technical data for profiles

Material: Aluminium EN AW 6060 T 66
Surface: mill-finished / powder-coated
Lengths: 3 m / 6 m

System accessories

- Exterior and interior corners
- Plastic covers
- LED lighting and controls

LED lighting (IP67)

- Warm white / neutral white / cool white
- CCT (all shades of white)
- RGBWW (all colours + warm white)
- RGB-CCT (all colours + all shades of white)

LED control

- Switch
- Remote control
- App control (WiFi)
- DALI